

Installation

LC2000

Patient Care Unit, 60", Fixed Water Closet

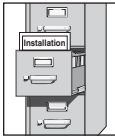
Table of Contents

Pre-Installation Information	2
Supplies Required	2
Step 1: Floor-Mount Water Closet	3
Step 2: Cabinet and Grab Bar	4
Step 3: Inline Backflow Preventer	5
Step 4: Flush Valve	5
Step 5: Terreon Top	5
Step 6: Drain and P-trap	6
Step 7: Water Closet Shroud and Door	6
Step 8: Completing Installation	6
Cleaning and Maintenance	7

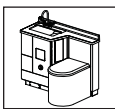
IMPORTANT!



BEFORE beginning installation, all supply, drain and waste piping rough-ins must be completed according to rough-ins received prior to receiving the unit. If you have not received rough-ins, contact your Bradley representative.



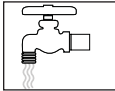
Read this entire installation manual to ensure proper installation. When finished with the installation, file this manual with the owner or maintenance department. Compliance and conformity to local codes and ordinances is the responsibility of the installer. Bradley cannot assume any responsibility for personal injury or damage to equipment due to an improperly installed unit.



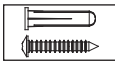
Left-hand model is shown throughout this manual. Installation of right-hand model is opposite. This manual covers all models included in the Bradley LC2000 series. Simply omit the steps that do not apply to the model you are installing.



Separate parts from packaging and make sure all parts are accounted for before discarding any packaging material. If any parts are missing, do not begin installation until you obtain the missing parts.



Make sure that all water supply lines have been flushed and then completely turned off before beginning installation. Debris in supply lines can cause valves to malfunction.



Hardware supplied by installer must be appropriate for wall construction. Wall anchors used must have a minimum pull-out rating of 1,000 lbs.



Product warranties and service parts information may be found on our web site at bradleycorp.com.

Supplies Required:

- Steel angles and hardware for anchoring the water closet (if concrete is lightweight or less than 4" thick)
- Hardware for waste outlet connections
- Supply piping to water closet, faucet, and optional vacuum breaker, bedpan washer and dialysis box
- Waste outlet piping to water closet, drain and P-trap
- Silicone caulk
- (10) 3/8" wall anchors and hardware to secure the cabinet to the wall (min. pull-out rating of 1,000 lbs.)
- (5) 1/4" wall anchors and hardware to secure the cabinet support brackets to the wall (min. pull-out rating of 1,000 lbs.)
- (4) #10 wall anchors and hardware to secure the water closet shroud to the wall (min. pull-out rating of 1,000 lbs.)

1 Water Closet

A

Align water closet waste outlet per rough-in submittal. Using the water closet as a template, drill four 2-1/8" deep holes into the water closet support anchoring locations (use a 5/8" concrete drill bit). Holes must be clean and free of debris.

B

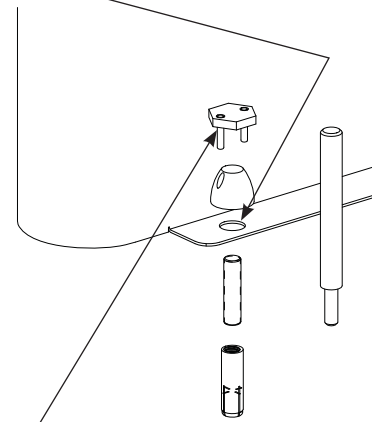
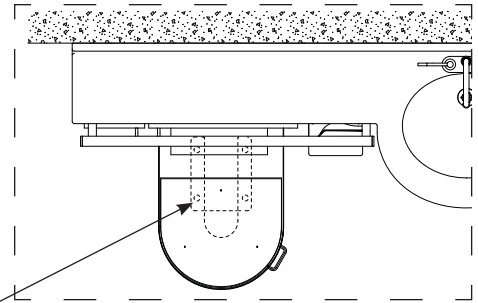
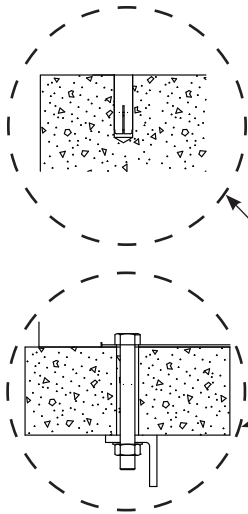
Drive the four Ø 1/2" anchors provided into the drilled holes for the water closet using a hammer and the setting tool supplied. The anchors should be driven in flush with the floor.

Position the water closet in place on the floor and secure to the floor with the 1/2" hardware provided.

IMPORTANT: If the floor concrete is lightweight or less than 4" thick, Bradley recommends through-bolting to the steel angles under the floor.

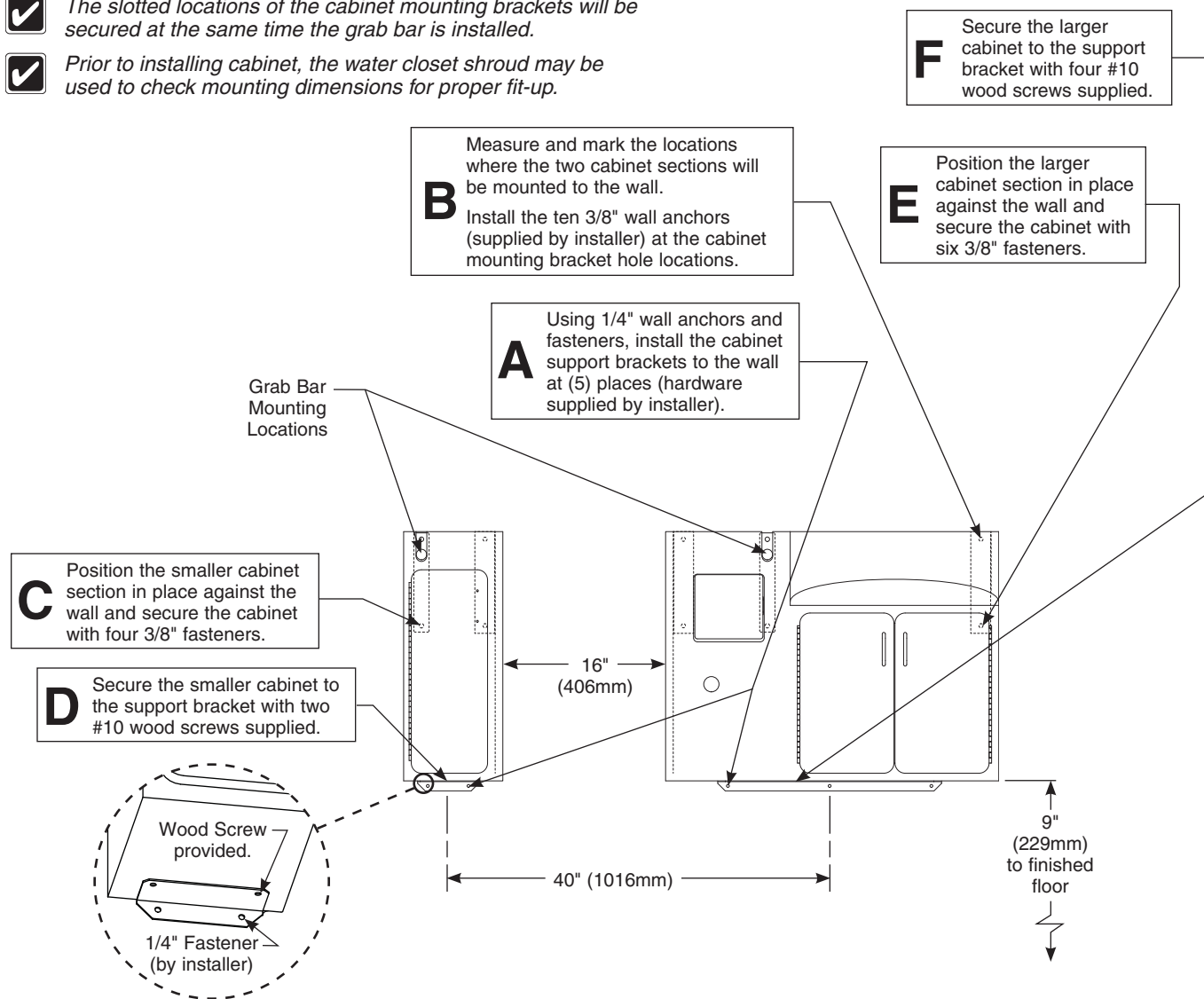
C

Connect the water closet plumbing and waste through the floor or wall as required for your application.



2a Cabinet

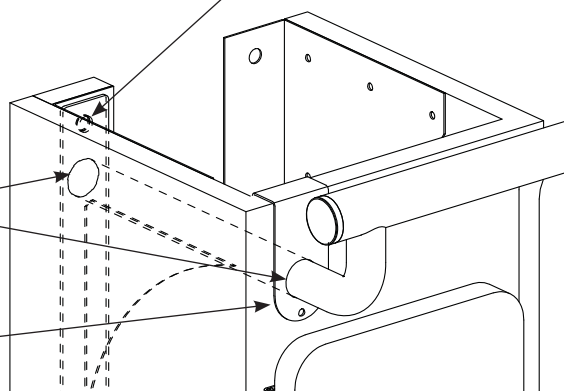
- ✓ For corner/alcove applications please allow enough spacing for countertop overhang. Wall trim is supplied for side splash options.
- ✓ The slotted locations of the cabinet mounting brackets will be secured at the same time the grab bar is installed.
- ✓ Prior to installing cabinet, the water closet shroud may be used to check mounting dimensions for proper fit-up.

**2b Grab Bar**


The grab bar must be able to support a 250-pound person to comply with ADA standards. Bradley's grab bar, when installed properly, exceeds ADA Accessibility Guidelines for Buildings and Facilities.

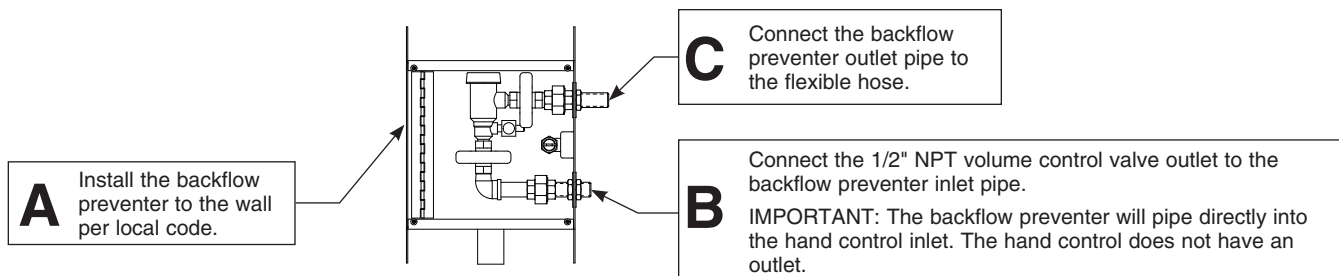
- A** Set the grab bar in place. The bar will fit into the two slots in the cabinet sections. One of the grab bar flanges will rest against the cabinet mounting bracket on the small cabinet section.
- C** Install the grab bar slot cover using the #8 screws supplied.

- B** Secure the grab bar in place with four 3/8" fasteners (supplied by installer).

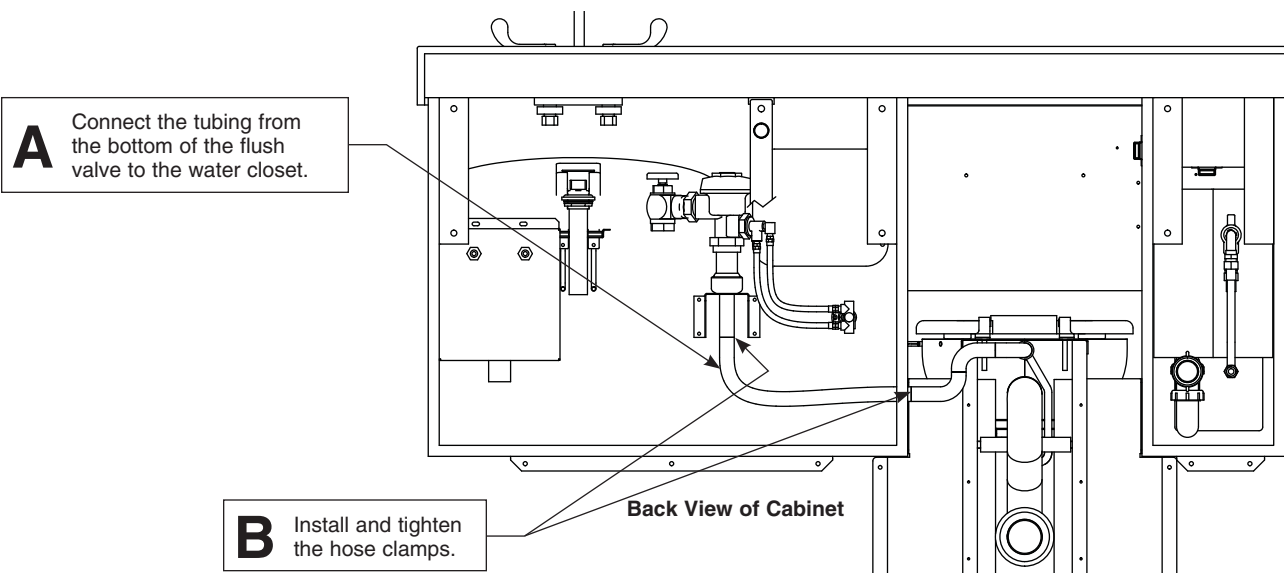


3 Inline Backflow Preventer (for hand or volume control)

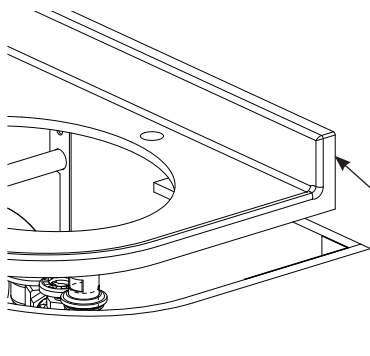
 For more details, please reference the rough-in submittal for the backflow preventer.



4 Flush Valve



5 Countertop



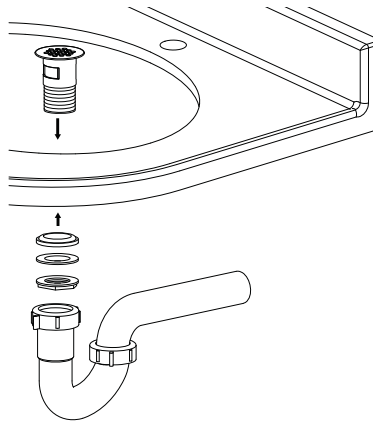
A Set the lavatory top in place so the back and wall sides are flush with the edge of the cabinet. Do not secure the top with silicone caulk at this time. The top will be secured after installation is complete and the unit is tested for leaks.



6 Drain and P-trap



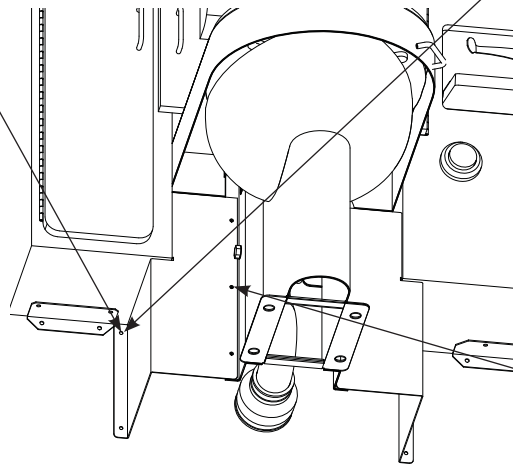
Drain tailpiece is included and can be cut to fit as needed.



7a Water Closet Shroud

C

Secure the shroud sections to the wall with four #10 fasteners (provided by installer).



A

Position the water closet shroud sections in place around the water closet. Using the two shroud sections as templates, mark the hole locations for the four wall anchors. Remove the bracket and set aside.

Install the four #10 wall anchors (supplied by installer) at the hole locations.

B

Reposition the two shroud sections in place around the water closet.

Secure the shroud sections to the water closet flange with the six #10-24 fasteners provided.

7b Water Closet Door

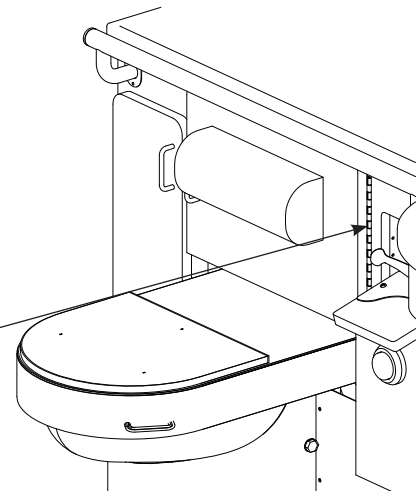


For ease of installation, the six mounting hole locations have been marked at the factory on the cabinet where the door is to be mounted.

A

Align the holes in the door hinge with the hole markings on the cabinet.

Secure the door in place with the six #10 Phillips-head wood screws provided



8 Completing Installation

- A.** Install the faucet according to the manufacturer's instructions. Turn on the water supplies and check for leaks and adequate water flow.
- B.** Activate the faucet, bedpan washer and flush valve several times to purge air from the supply lines (close all access doors when finished).
- C.** Apply a bead of silicone caulk between the top and the cabinet to secure the top to the unit.

Cleaning and Maintenance for Terreon®

Material Description: Terreon® is an NAHB Certified densified solid surface material composed of polyester resin and is resistant to chemicals, stains, burns and impact. Surface damage can be easily repaired with everyday cleansers or fine grit abrasives.

Routine Cleaning: Clean daily or as often as conditions require using a standard commercial or household cleaner such as Formula 409® or Windex®.

Stubborn Stains: Remove tough stains with Ajax®, Comet®, or Soft-Scrub® and a green Scotch-Brite® pad or lightly sand in a circular motion with 240 grit wet/dry sandpaper. The finish can be renewed with a maroon Scotch-Brite® pad.

Special Situations for Terreon Material

Scratches: Remove scratches with a green Scotch-Brite® pad. The finish can then be renewed with a maroon Scotch-Brite® pad, followed by a white Scotch-Brite® pad or 30-micron sandpaper.

Hard Water Deposits: Remove hard water deposits with a mild solution of vinegar and water. Always rinse the unit thoroughly after cleaning.

Restoring the surface: Use Hope's® Solid Surface cleaner and polish to refresh and protect the Terreon® Solid Surface material. Bradley recommends additional care and maintenance for the darker colored Terreon®, for complete instructions on this additional maintenance refer to Bradley technical document #1505.



Do not use strong acid or alkaline chemicals and cleansers to clean Terreon®. If these chemicals come in contact with the surface, wipe them off immediately and rinse with soapy water. Avoid contact with harsh chemicals such as paint remover, bleach, acetone, etc. Avoid contact with hot pans and objects.

Repair Kits: Terreon® repair kits are available. Contact your Bradley representative or distributor for part numbers and pricing. Repair kits are made to order and have a shelf life of 30 days.



Terreon® is a unique, cast solid surface material. Aggregate flow and distribution as well as shades of color can vary from product to product creating natural characteristics.

Cleaning Stainless Steel

Material Description: Stainless steel is extremely durable, and maintenance is simple and inexpensive. Proper care, particularly under corrosive conditions, is essential. Always start with the simplest solution and work your way toward the more complicated.

Routine Cleaning: Daily or as often as needed use a solution of warm water and soap, detergent, or ammonia. Apply the cleaning solution per the manufactures instructions and always use a soft cloth or sponge to avoid damaging the finish.

Stubborn Stains: To remove stains from stainless steel use a stainless steel cleaner and polish such as Ball® stainless steel cleaner or a soft abrasive. Always follow the manufactures instructions and apply in the same direction as the polish lines.



Never use ordinary steel wool or steel brushes on stainless steel. Always use stainless steel wool or stainless steel brushes.

Special Situations for Stainless Steel Material

Fingerprints and Smears: To remove fingerprints or smears use a high quality stainless steel cleaner and polish in accordance with the manufactures instructions. Many of these products leave a protective coating the helps prevent future smears and fingerprints.

Grease and Oil: Grease and Oil : To remove grease and oil use a quality commercial detergent or caustic cleaner. Apply in accordance to the manufactures instructions and in the direction of the polish lines.

Precautions: Precautions: Avoid prolonged contact with chlorides (bleaches, salts), bromides (sanitizing agents), thiocyanates (pesticides, photography chemicals, and some foods), and iodides on stainless steel equipment, especially if acid conditions exist.



Do not permit salty solutions to evaporate and dry on stainless steel.

The appearance of rust streaks on stainless steel leads to the belief that the stainless steel is rusting. Look for the actual source of the rust in some iron or steel particles which may be touching, but not actually a part of the stainless steel structure.



Strongly acidic or caustic cleaners may attack the steel causing a reddish film to appear. The use of these cleaners should be avoided.

Brand Names

Use of brand names is intended only to indicate a type of cleaner. This does not constitute an endorsement, nor does the omission of any brand name cleaner imply inadequacy. Many products named are regional in distribution, and can be found in local supermarkets, department and hardware stores, or through your cleaning service. It is emphasized that all products should be used in strict accordance with package instructions.