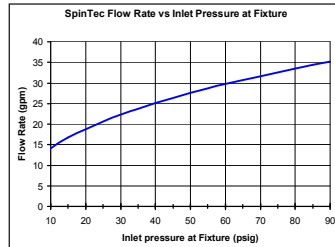


- 100% Fiberglass surround construction - exterior includes UV inhibitor gel-coat
- Insulation factor protection rating R-12 (wall sections) and R-24 (roof & base)
- Designed and constructed to seismic four earthquake ratings when properly anchored
- Wind load capabilities of up to 150 mph (193.12kph), three-second gusts When Properly Anchored
- Top & Base lift capability
- CSA certified external electrical control panel – NEMA 4X
- Combination Drench Shower, Eyewash, Eye/Face Wash and Drench Hose Fixtures are UL Certified to ANSI Z358.1
- Enclosure CSA certified to UL 94 V-0 self-extinguishing fire rating
- Electrical System Third Party Certified to Local Area Requirements, CSA or equivalent.
- Resin and insulation rated to a Class 1 ASTM flame spread rating of less than 25

Standard Equipment

Safety Shower, Eyewash and Drench Hose

Standard showerhead is 3.1" (78.7mm) diameter highly visible yellow impact-resistant plastic. SpinTec™ drench showerhead features integral 22 GPM (84.4 LPM) flow control, conserves water and provides equal distribution throughout the spray pattern providing a more effective wash down. Shower is activated by a stainless steel pull rod. SpinTec™ showerheads are covered by one or more of the following patents: 8113446; D594,089; D669,555; Reg. Comm. Des. D001079560-0001. Other patents pending.



Bradley's drench shower and eyewash ship with corrosion-resistant BradTect® yellow coating, providing additional protection from nature's elements. The drench shower, eyewash and drench hose are equipped with a freeze protection valve that begins to bleed cold water at 35°F (2°C) and is fully closed at 40°F (5°C). A scald protection valve is also installed as a standard feature. The scald valve begins to bleed warm water at 105°F (41°C) and is fully closed at 95°F (35°C).

Inlet and Water Supply Pressure

1½" cam lever coupling

Standard Shelter Size

106.5"(2705mm) O.D. x 57.25" (1454mm) O.D. x 109" (2769mm) O.D. height.

Enclosure Construction

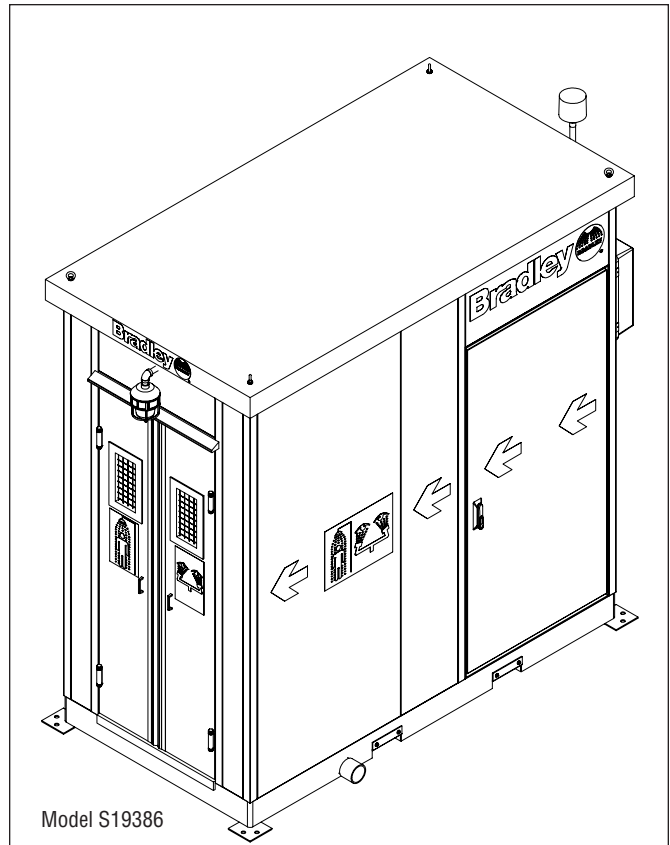
External Features

100% FRP (fiberglass-reinforced plastic) insulated vacuum-formed roof, walls and floor sections with UV-inhibited gel-coat surface. Insulates and protects the shelter from sunlight UV ray degradation, exposure from chemical and salt-laden air environmental conditions.

Resins and insulation are rated as a Class 1 ASTM E84 to flame spread rating of less than 25. Resin laminate is CSA-certified to flame self-extinguishing standard UL 94 V-0.

The corrosion-resistant enclosure helps protect against internal freezing with an insulation protection factor of R-12, roof and floor insulation R-value of R-24. Shelter is designed and constructed to seismic four earthquake building code rating, and can withstand hurricane wind loads of up to 150 mph (241.4 kph) and three-second gusts when properly anchored.

Exterior of shelter is safety yellow (RAL-1018), and includes safety decals directing the injured party to the double-acting spring hinge doors that include stainless steel handles and stainless steel framed viewing windows with wire-reinforced safety glass. The crash doors include weather strips to maintain the maximum seal against wind, rain and snow.



The FRP vacuum-formed base includes stainless steel reinforced bumper plates for added protection when moving the shelter. Roof-located lifting eyes are attached to the stainless steel base mounting plates, permitting crane lifting and ease of placement at the jobsite.

Internal Features

The shower area includes a sloped catch basin drain with a removable fiberglass floor grate that allows water to drain to a central location. Exterior drain may be located on either side of the shower surround with an option to drain directly under the shower. 3" PVC connections are provided for installer-supplied device for containment of contaminated water as needed (connections are located at drain areas on the side of the unit).

An FRP splash panel is located behind the shower fixture allowing separation between the shower and the tepid water supply areas.

Lockable FRP maintenance doors are located at each side at the rear of the shower surround allowing easy access to the tepid water system and internal space heating systems. Flooring in this area allows for down and drain water flow to the main shower drain area.

Tepid Water Delivery System

The self-contained enclosed safety shower holds 540 gallons of water to provide the ANSI required simultaneous flush from the drench shower and eyewash for a continuous 15-minute duration. The system must be combined with a water preservative, which prevents bacteria, fungi and algae growth. A heating element maintains the water between the ANSI-prescribed range of 60-100°F (15.55-37.78°C), providing a tepid flush. Two RTD sensors monitor the temperature of the water inside the 540-gallon tank and send a read out to the controller. This temperature may also be monitored remotely.

 **Bradley Enclosed Safety Showers are non-cancelable, non-refundable and non-returnable.**

Electrical/Alarm System

Water Temperature Sensing Alarms

The temperature sensing alarms alert those doing a visual inspection or those that are at a remote location that the water temperature has fallen below the ANSI Z358.1 recommended level of 60°F (15.55°C). Conversely, the alarm will also produce a read-out and an electronic signal to a remote monitoring location if the water should exceed 100°F (37.78°C).

Flow Switch Alarm System (DPDT)

A double-pole double-throw water flow switch is a standard feature. Alarm flashes and sounds upon activation of the safety shower system. The flow switch activates the exterior alarm strobe light and horn. The system includes alarm reset and horn silencer features for responder control. Optional Alarm Points: Shower Crash Door Contacts.

Electrical System

Standard electrical utility components consist of an exterior over-door location light, internal ceiling mount vapor-sealed fluorescent light, flow switch alarm system and internal convection space heater. Electrical control enclosure is located on the exterior wall for ease of electrical power by owner. Standard unit operates on 208V 60Hz single-phase.

Pressure Booster

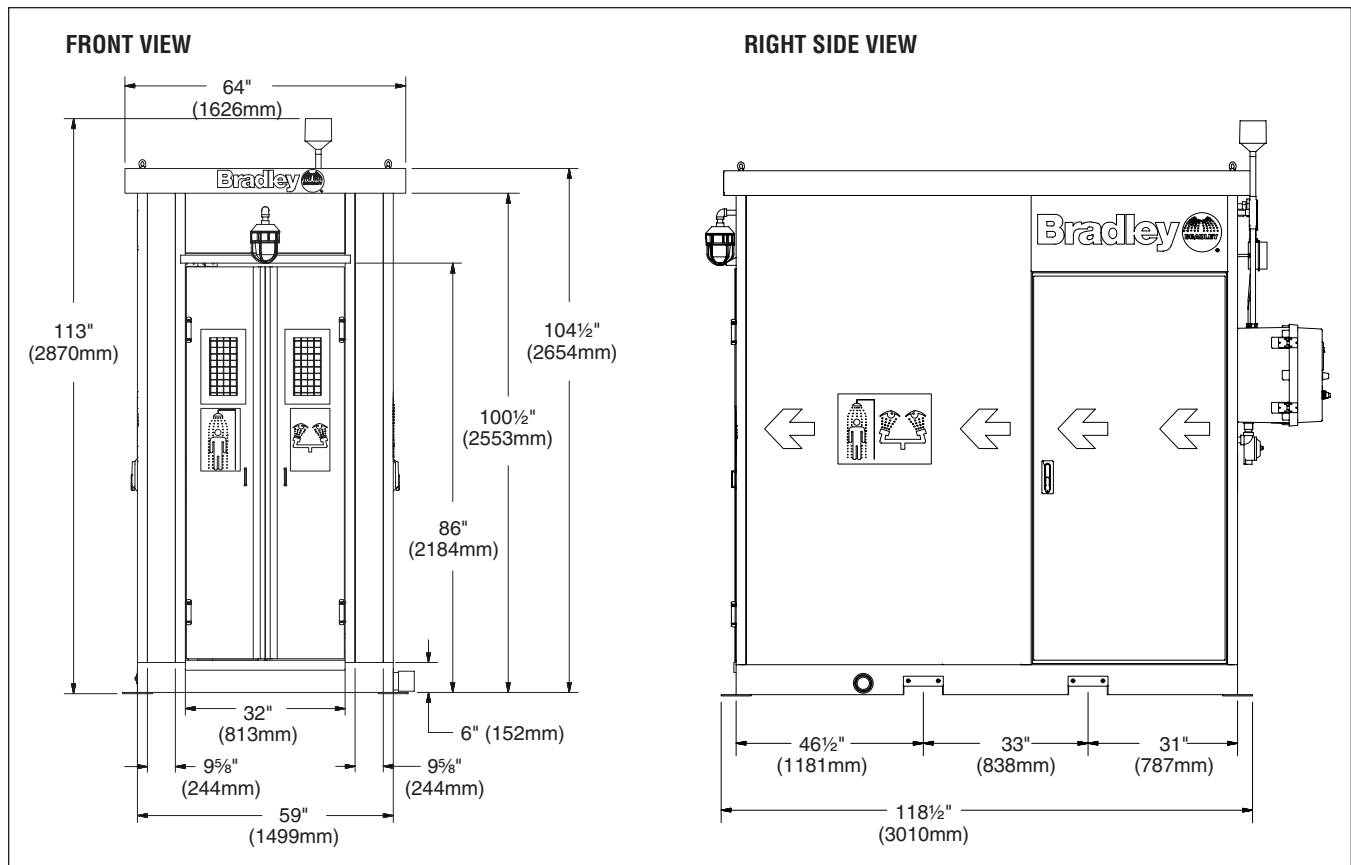
Two-horsepower pressure booster is standard. Pressure booster is installed inside of the enclosure. The pump is installed to provide the required psi from the storage tank to the safety fixtures. No additional power sources needed. The pump is powered by the single power feed to the enclosure. Booster pump features an automatic on/off flow switch and has pressure reducing capabilities on the outlet. All pressure switches and controls necessary to automatically start the pump are included.

ANSI Z358.1 Compliance

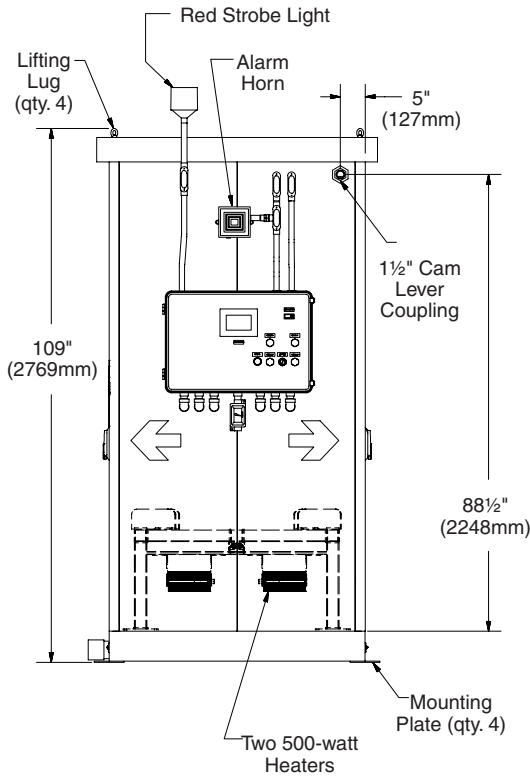
Self-Contained combination systems require a visual inspection per ANSI Z358.1 to ensure proper fluid level (7.5.3).

- Only one electrical connection is required.**
- Low water level alarm; remote tie-in and on-site visual indicator lights.**
- Remote ambient temperature sensing via thermocouple and on-site digital temperature read-out.**
- Read-out of water temperature via viewing window.**
- Horn silencer standard; strobe continues to flash to alert first responders until manually shut off.**

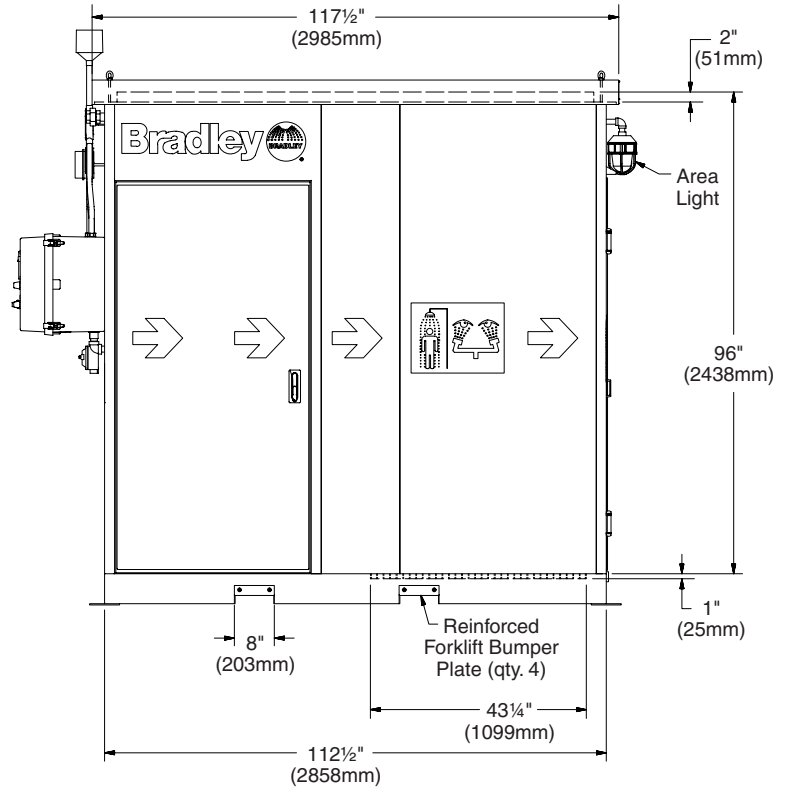
Bradley Enclosed Safety Showers are non-cancelable, non-refundable and non-returnable.



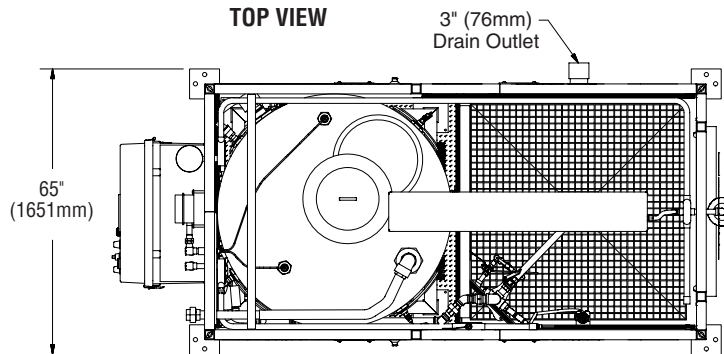
BACK VIEW



LEFT SIDE VIEW



TOP VIEW



Bradley Enclosed Safety Showers are non-cancelable, non-refundable and non-returnable.

Model

S19386 Self-Contained Enclosed Outdoor Safety Shower


Bradley Enclosed Safety Showers are non-cancelable, non-refundable and non-returnable.
Selections (must select one from each category)
Fixture Material:

- A** Galvanized Steel with Yellow BradTect® Coating
- B** Stainless Steel

Ball Valve Material:

- 1** Chrome-plated Brass (standard) (not available with stainless steel unit)
- 2** Stainless Steel

Eye Rinse Platform:

- A** Eyewash, Halo
- B** Eye/Face Wash, Halo
- S** Special _____

Drain Location:

- 1** Drain Right (standard)
- 2** Drain Left
- 3** Drain Center
- S** Special _____

Alarm Contacts:

- A** DPDT Flow Switch + Alarm System, Red Strobe (standard)
- B** DPDT Flow Switch + Alarm System, Red Strobe and Internal Ambient Temperature Sensing Alarm
- C** DPDT Flow Switch + Alarm System, Red Strobe and Proximity Switch Sensors on Shower Crash Doors
- D** DPDT Flow Switch + Alarm System, Red Strobe and Internal Ambient Temperature Sensing Alarm with Proximity Switch on Shower Crash Doors
- S** Special _____

Area Light Lens:

- A** Green (standard)
- S** Special _____

Electrical Class:

- 1** General Area Classification
- 2** Class 1, Division 2
- 3** Class 1, Division 1
- S** Special _____

Supply Voltage:

- B** 208V 60Hz single phase (standard)
- C** 240V 60Hz single-phase
- D** 480V 60Hz three-phase
- E** 600V 60Hz three-phase
- S** Special _____

Convection Heater

- A** Electric with Local Thermostat Control (standard)
- B** Electric with Remote Thermostat Control/Alarm
- C** Steam Heater with Temp Control Valve (Internal Steam Heater for Ambient Temp Control)
- D** Steam Temp Control Valve Only (Internal Steam Heater for Ambient Temp Control)
- S** Special _____

Custom Adders:

Job Name:
Location:

This is to acknowledge that the "End User" identified below has marked the boxes in the selection guide above to design an enclosure that will meet its site and specification requirements, and wishes to have Bradley custom-build that enclosure to its order, on the understanding that the order may not be canceled, the enclosure may not be returned and that no refund of any portion of the purchase price for the enclosure will be made (except under Bradley's warranty). It is also to acknowledge that the "Distributor" identified below is placing an order with Bradley for the enclosure, on the Terms and Conditions found on Bradley's website, at www.bradleycorp.com, again on the understanding that the order may not be canceled, the enclosure may not be returned and that no refund of any portion of the purchase price for the enclosure will be made (except under Bradley's warranty).

 name of "End User"

 name of "Distributor"

 by

 by

 title

 title

 date

 date