



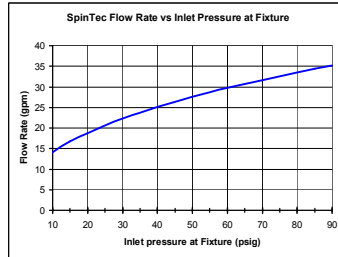
Enclosed Outdoor Safety Shower with Tepid Water Inlet

- 100% Fiberglass Surround Construction – Exterior Includes UV Inhibitor Gel-Coat
- Flame-Retardant Resin with a Class 1 Flame Spread Index per ASTM E-84
- Multi-directional drain system
- Insulation Factor Protection Rating R-8 (ASTM C518)
- Top & Base Lift Capability
- Combination Drench Shower, Eyewash, Eye/Face Wash and Drench Hose Fixtures are UL Certified to ANSI/ISEA Z358.1
- Designed to National Electric Code

Standard Equipment

Safety Shower, Eyewash and Drench Hose

Standard showerhead is 3.1" (78.7mm) diameter highly visible yellow impact-resistant plastic. Patented SpinTec™ drench showerhead features integral 22 GPM (83.3 LPM) flow control, conserves water and provides equal distribution throughout the spray pattern



providing a more effective wash down. Shower is activated by a stainless steel pull rod. Bradley's drench shower and eyewash ship with corrosion-resistant BradTect® yellow coating, providing additional protection from nature's elements (optional stainless steel drench shower and eye/face wash is available). The drench shower, eyewash and drench hose are equipped with a freeze protection valve that begins to bleed cold water at 40°F (5°C) and is fully open at 35°F (2°C). A scald protection valve is also installed as a standard feature. The scald valve begins to bleed hot water at 95°F (35°C) and is fully open at 100°F (38°C).

The Halo eyewash system offers a high performance rinsing platform that provides rapid relief to an individual's eyes that have been injured by chemicals or particulates. The eyewash includes an integral 5.1 GPM (19.2 L) flow control, providing water at a safe velocity while maintaining its effectiveness (exceeds minimum water flow of 0.4 GPM (1.5 L) at 30 PSI (2.0 bar)). The eyewash is protected by flip open dust covers that open when the product is activated. Safe, steady water flow under varying water supply conditions from 30–90 PSI (2.0-6.1 bar) is assured by integral flow control in the sprayhead assembly. Halo™ is covered by one or more of the following patents: 9,700,484; 9,314,398; D662220; D673298; D662605; D685920; D662219; and D671228. Other patents pending.

Inlet and Water Supply Pressure

Water inlet has a 1¼" NPT union connection; must be supplied with a minimum 30 psi (2.0 bar).

Enclosure Construction

External

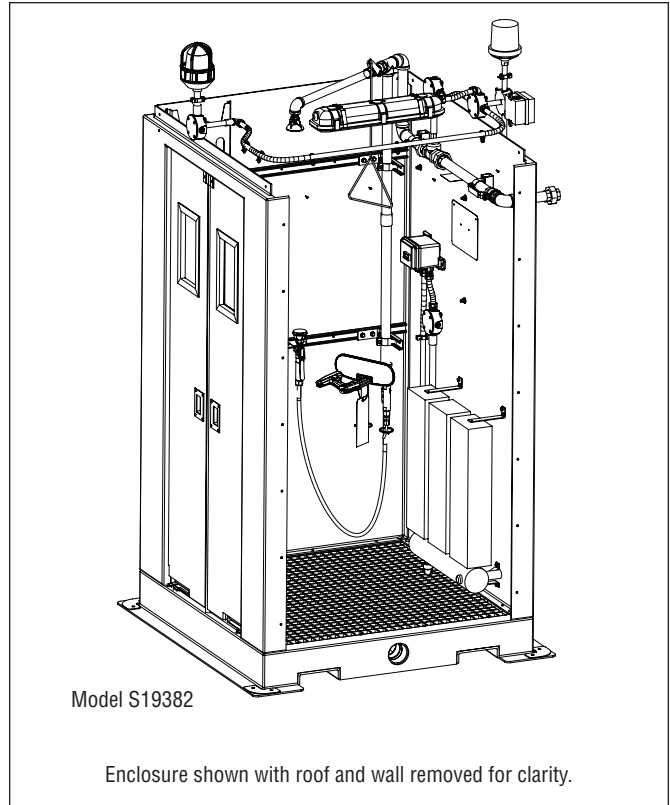
The shelter is constructed from 100% FRP (fiberglass-reinforced plastic) that is laminated and sealed around an insulating core. The FRP is coated with a UV-inhibiting gel coat to protect the roof, walls and base from degradation due to prolonged exposure to sunlight, harsh chemicals or salt-laden marine environments.

A special flame-retardant polyester resin has a Class 1 flame spread index per ASTM E-84 and a smoke developed index of more than 450.

The corrosion-resistant enclosure helps protect against internal freezing with an insulation factor of R-8.

Exterior of shelter is safety yellow (RAL-1018), and includes safety decals directing the injured party to the weather-resistant double-acting spring hinge doors that include stainless steel handles and safety glass viewing windows. The crash doors include weather strips to maintain the maximum seal against wind, rain and snow.

The FRP base includes extruded channels for added protection when moving the shelter with a fork truck. Stainless steel lifting eyes are attached to the roof, permitting optional crane lifting when placing the unit.



Internal

The shower area includes a sloped drain below a removable fiberglass floor grate. Three drain ports are provided (left, center, right) and can be connected to external drain plumbing in any configuration using a 3" NPT fitting in any port.

Code Compliance and Certifications



UL Classified to ANSI/ISEA Z358.1



UL Listed Industrial Control Panel(s) for US and Canada

Designed to the National Electrical Code (NEC/NFPA70)



Bradley Enclosed Safety Showers are non-cancelable, non-refundable and non-returnable.



Enclosed Outdoor Safety Shower with Tepid Water Inlet

Electrical/Signaling System

Signaling System

A signaling system with double pole double throw flow switch activates the the exterior warning light and horn. A push button is provided to silence the horn after the shower has been activated. A second set of dry contacts allow the user to provide alarm connections to a remote control room in the facility.

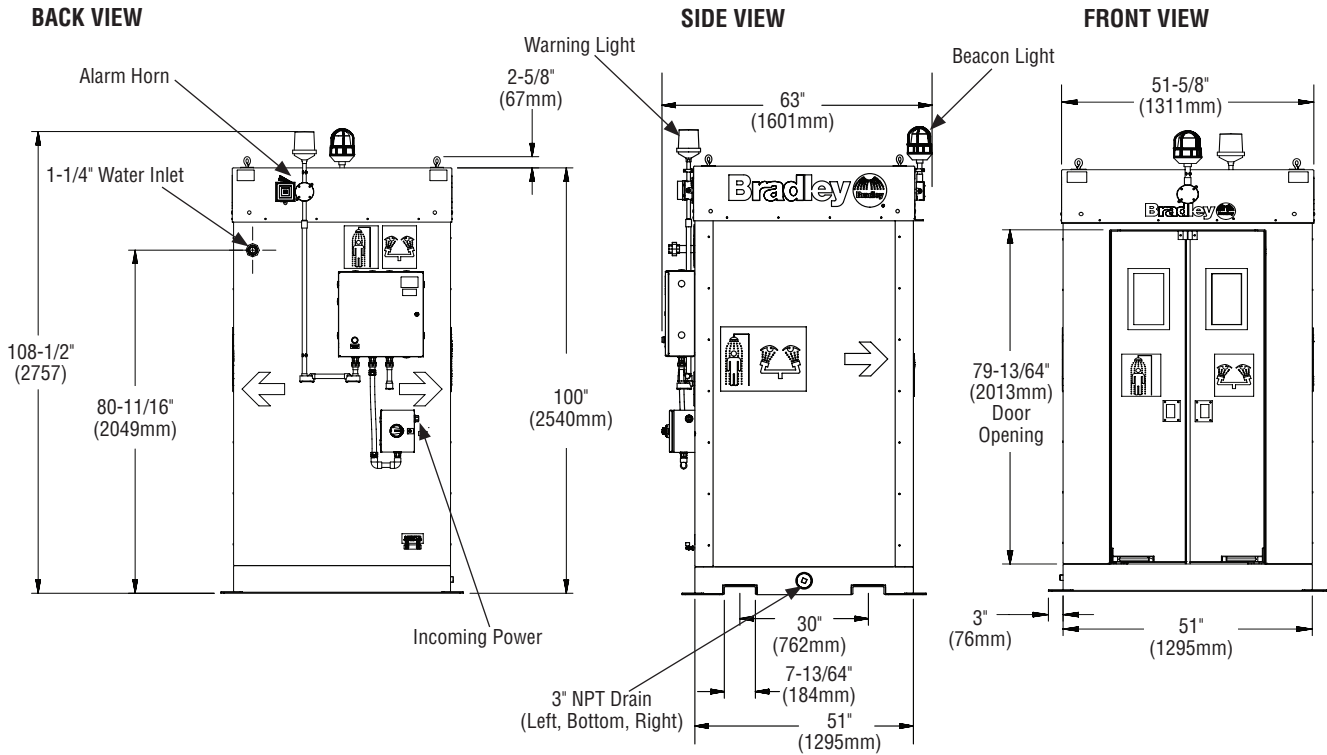
Electrical System

Standard electrical system components include an exterior over-door beacon light, internal ceiling-mounted light, and an internal convection space heater. The convection heater protects the enclosure to -40°F (-40°C). The control enclosure or junction box is located on the exterior wall for ease of electrical power connection by owner.

- Only one electrical connection is required.
- Disconnect switch included.
- Grounding plate included.

Tepid Water Inlet

System includes a 1-1/4" NPT union for a fast connection to a potable supply of tepid water 60-100°F (16-37°C). Tepid water is required per ANSI/ISEA Z358.1.



Bradley Enclosed Safety Showers are non-cancelable, non-refundable and non-returnable.



Model

S19382 Enclosed Outdoor Safety Shower with Tepid Water Inlet



Bradley Enclosed Safety Showers are non-cancelable, non-refundable and non-returnable.

Selections (must select one from each category)

Electrical Class:

- GA General Area Classification
- D2 Class I, Division 2, Groups C, D; T-Code: T3A
- D1 Class I, Division 1, Groups C, D; T-Code: T3B

Supply Voltage:

- V1 120V 60Hz single phase
- V2 208V 60Hz single phase
- V4 240V 60Hz single phase

Safety Shower Configuration:

- EW Halo eyewash and Spintec drench shower
- FW Halo eye/face wash and Spintec drench shower
- SS All stainless steel Halo eye/face wash, Spintec drench shower

Custom Adders (may impact electrical rating):

Job Name: _____

Location: _____

Revision Date: _____

A signed submittal drawing is required. This submittal drawing will be provided upon receipt of order.

This is to acknowledge that the "End User" identified below has marked the boxes in the selection guide above to design an enclosure that will meet its site and specification requirements, and wishes to have Bradley custom-build that enclosure to its order, on the understanding that the order may not be canceled, the enclosure may not be returned and that no refund of any portion of the purchase price for the enclosure will be made (except under Bradley's warranty). It is also to acknowledge that the "Distributor" identified below is placing an order with Bradley for the enclosure, on the Terms and Conditions found on Bradley's website, at www.bradleycorp.com, again on the understanding that the order may not be canceled, the enclosure may not be returned and that no refund of any portion of the purchase price for the enclosure will be made (except under Bradley's warranty).

name of "End User" _____

by _____

title _____

date _____

name of "Distributor" _____

by _____

title _____

date _____