



- Completely Preassembled Unit
- Quick, Easy Installation

## Specifications

### Materials

Ablution panel is type 304 stainless steel. All other exposed parts are stainless steel or chrome-plated brass. Valve bodies are brass casting. Supply inlets are flexible stainless steel hoses.

## Standard Equipment

### Valve Type as Selected

For more information on each valve type, please enter the model number in the search box at [www.bradleycorp.com](http://www.bradleycorp.com).

### Wash Spout

Stainless steel Ablution spout or chrome-plated severe service head options with anti-splash 0.5GPM (1.9LPM), 1.0GPM (3.8LPM) or 1.5GPM (5.68LPM) flow.

### Supply Inlets

Supply inlets are 3/8" O.D. Comp (without supply stop) or 5/8" O.D. Comp (with optional supply stop) flexible hoses. Inlets are accessible through the back of the panel or through knockouts in the top and bottom covers.

### ABL Spout Quick Connect

Plastic tubing to connect valving to spout.

## Optional Equipment

### Grab Bar

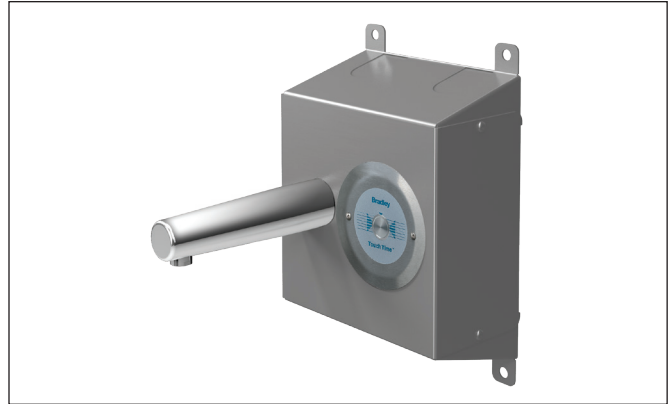
For added safety and support for users.

### DC International Wall Plug

Low-voltage UL/CSA listed 120V/12VDC plug-in adapter required with TouchTime pushbutton and TouchTime piezo switch.



DC International Wall Plug  
261-147A



## Required Selections

### Valve Type (select one):

- AST** Air Pushbutton
- SV** Single Compression Valve (Default)
- TTPA** TouchTime® Pushbutton\*
- TPPB** TouchTime® Piezo Switch\*

### Supply Stop Type (select one):

- ST** Supply Stops
- NONE** No Supply Stops

### Spout Type (select one):

- PSG05** Ablution Spout Satin Finish (Flow Rate=0.5 GPM/1.9 LPM)
- PSG10** Ablution Spout Satin Finish (Flow Rate=1.0 GPM/3.8 LPM)
- HPSG05** Ablution Spout High Polish Finish (Flow Rate=0.5 GPM/1.9 LPM)
- HPSG10** Ablution Spout High Polish Finish (Flow Rate=1.0 GPM/3.8 LPM)
- SXABL** Ablution Severe Service Spout (Flow Rate=1.5 GPM/5.68LPM)

### Quick Connect Kit (select one):

- ABLQC** ABL Spout Quick Connect Kit

### Grab Bar Type (select one):

- G18ABL** 18" Security Grab Bar
- G24ABL** 24" Security Grab Bar
- NONE** No Grab Bar

### Wall Plug Type (select one):

- DCP** DC International Wall Plug\*
- NONE** No Wall Plug

\*TTPA and TTPB valves require a low-voltage UL/CSA listed 120VAC/12VDC plug-in adapter.



# ABP-1WCA In-Wall Mounted Hand/Foot Washing System

Recommended Ablution System Heights	
Ablution Types	Floor to Spout/Head Centerline Height
Ablution w/ seat *	29" (740mm)
Ablution w/ lavatory *	59" (1499mm)
Ablution no seat	37" (940mm)

\* Bradley does not supply seat or lavatory.

