


Metering Air Valve

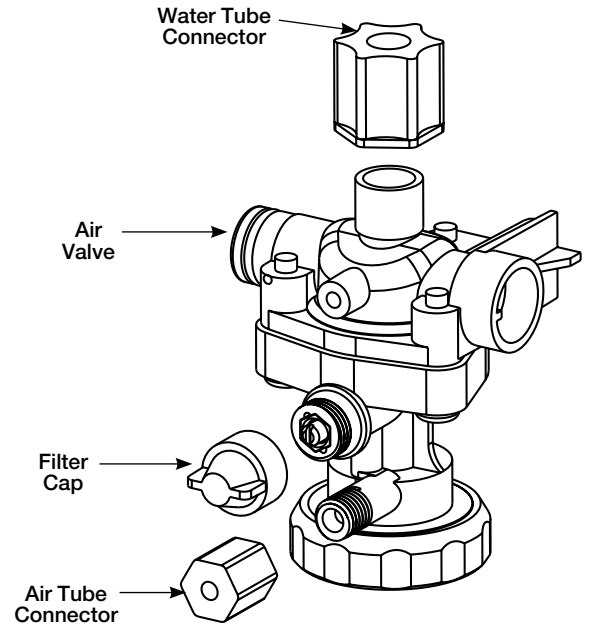
 The air valve timer is located next to the tube connector on the air valve body. The timer is capped with a filter to prevent dirt build-up on the timer. The air valve timing can be adjusted from 5–60 seconds.

1 Adjust Air Valve Meter Time

A Remove filter cap and use a screwdriver to tighten or loosen the timer (see illustration at right). Turning the timer clockwise increases the time; turning the timer counterclockwise decreases the time.

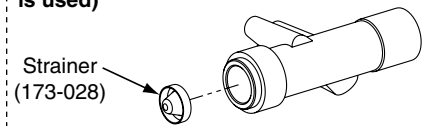
B Continue to adjust until the timer is set at desired length.

C Replace filter cap over the timer.



Tempered Line Adapter Option Part no. S39-804

(replaces S59-4000 if tempered line is used)

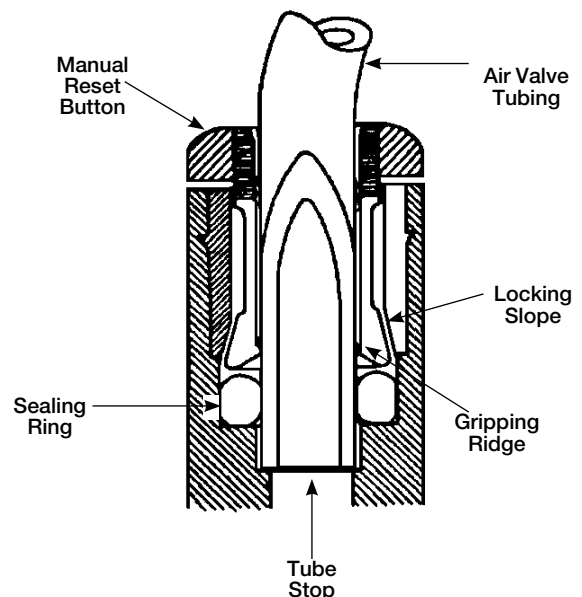


2 Tube Connection Leaks

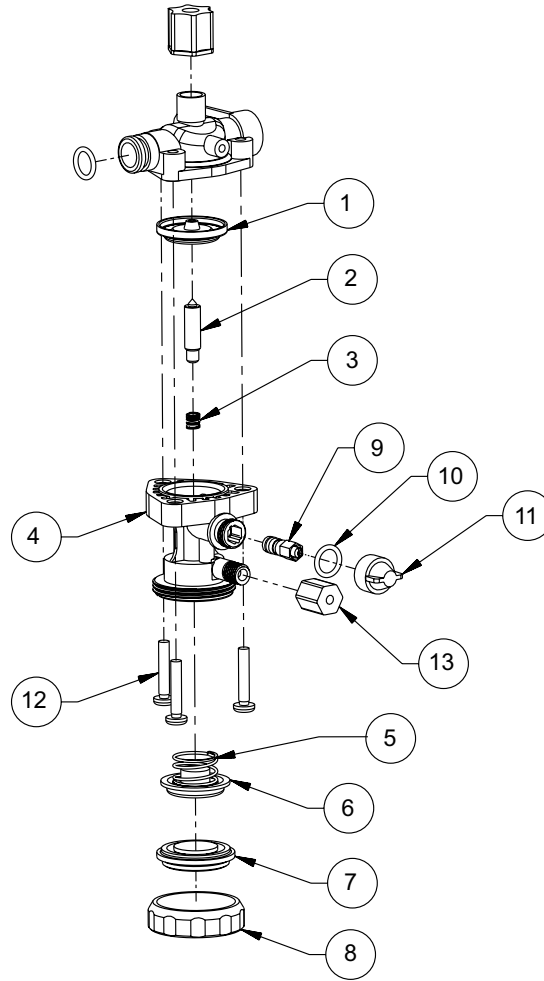
A Push in the orange manual release button while pulling the tube out (see illustration at right) to disconnect the tube at the connector. No tools are needed.

B To correct a leak, press tubing firmly into the connector and make sure it is seated.

C If leak persists, remove tubing from the fitting, and trim the tubing end square with a razor-sharp knife. If leak continues, replace the fitting or contact your Bradley representative for assistance.



AST4 Valve Repair Kits



Item	Description	AST 4 Valve Kit S65-260	Repair Kit (Upper) S65-261	Repair Kit (Lower) S65-262
		Qty.		
1	Diaphragm	1	—	1
2	Armature	1	—	1
3	Spring	1	—	1
4	AST 4 Valve Upper Body	1	—	—
5	Spring	1	1	—
6	Magnet / Diaphragm Assembly	1	1	—
7	AST 4 Valve Cover	1	1	—
8	AST 4 Valve Clamp Nut	1	1	—
9	AST 4 Valve Timer Assembly	1	—	—
10	O-Ring, #2-012	1	—	—
11	AST 4 Valve Timer Cover	1	—	—
12	Screw, #8 x 7/8"	3	—	—
13	Compression Nut, 1/8" Tube	1	1	—

Metering Air Valve Troubleshooting

Problem	Cause	Solution
Valve will not shut off.	Timing mechanism is clogged.	Clean and inspect timing mechanism. 1. If compressed air is available, blow water and debris from timer cover of timing mechanism. 2. Turn adjusting screw out all the way. Clean and inspect screw and valve body. 3. Turn adjusting screw in to desired cycle time.
Valve will not turn on.	Water is not being supplied to unit.	Open all stops on mixing valve.
	Water pressure is over 80 PSI.	Install a pressure reducing valve.
	Failed diaphragm/magnet assembly.	Unscrew the valve clamp nut on valve. Remove valve cover. Gently press the diaphragm. The valve should activate. If not, replace the diaphragm/magnet assembly.
Timing can not be adjusted for more than 5 seconds.	There is an air leak.	Check the valve assembly. 1. Check all tubing and fittings for proper assembly. 2. Tighten cap and nut on 1/8" tubing.
Push button does not work properly.	Air volume may not be sufficient to operate valve.	Check for leaks and lubricate U-cup. 1. Check all fittings for air leaks. 2. Disassembly push button and lubricate U-cup seal.
Water is dripping from the spouts or shower heads	Debris has accumulated on valve seat or orifices.	Clean and inspect valve seat. 1. Remove screws and disassemble metering valve. 2. Clean valve seat and inspect for deep gouges or scratches. Replace valve body if necessary. 3. Remove any debris clogging off-center hole in rubber diaphragm.