



812, 817, 832, 837, 852, 857

Bariatric Grab Bar Series

Heavy Duty Bariatric Stainless Steel Grab Bar

- ☐ Models 812 (concealed) & 817 (exposed) — 1-1/2" O.D.
- ☐ Models 832 (concealed) & 837 (exposed) — 1-1/4" O.D.
- ☐ Models 852 (concealed) & 857 (exposed) — 1" O.D.

Product Materials

FLANGES: 3/8" dia. 13 gauge stainless steel.

ESCUTCHEONS: 22 gauge stainless steel. One-piece drawn construction with exposed surfaces in architectural satin finish. Snap over flanges to conceal mounting screws.

TUBING: 18 gauge stainless steel, seamless construction with exposed surfaces in architectural satin finish. Bent ends of tubing pass thru the flanges and are welded for maximum strength. Intermediate supports are contour cut and joined by welding to form an integral part of the grab bar. All exposed welds ground and polished to blend. Mandrel bending process maintains uniform bar diameter. Return provides 1 1/2" standard safety clearance between wall and bar.

Strength

When properly mounted, all Bradley heavy duty grab bar systems meet or exceed the requirements of ANSI Standard A117.1, the ADA and ABA Accessibility Guidelines for Buildings and Facilities (ADAAG), and the Uniform Federal Accessibility Standard (UFAS). Select dimensions of configurations are 3rd party tested to support up to 900 or 1000 pounds. See configurations on following page. Wall must be reinforced in the area of the grab bar in order to support the load it is intended to support.

WARNING Only models/configurations listed on this tech data have been rated for use up to 900 or 1000 pounds. See info on following page for available options/configurations.

Installation

For instructions on installation, warnings and maintenance, please visit www.bradleycorp.com.

ADA Compliant

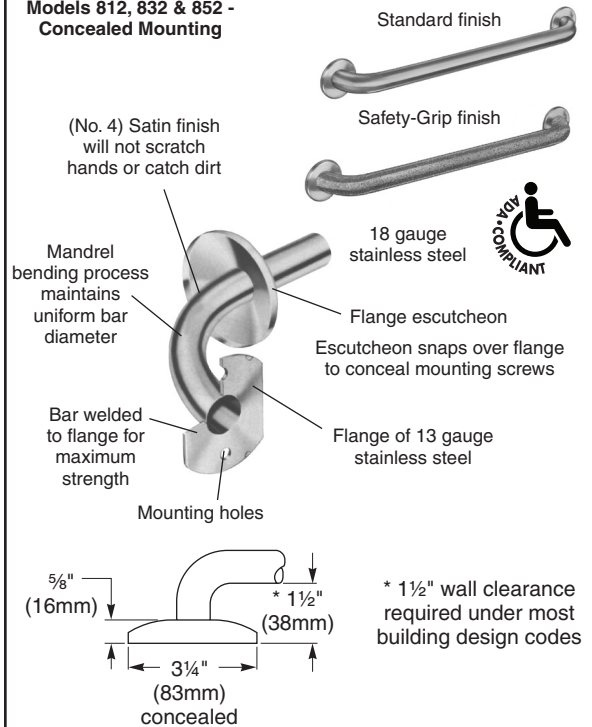
- ☒ Consult local and national accessibility codes for proper installation guidelines.
- ☒ Conformity and compliance to local and national codes is the responsibility of the installer.

Guide Specification

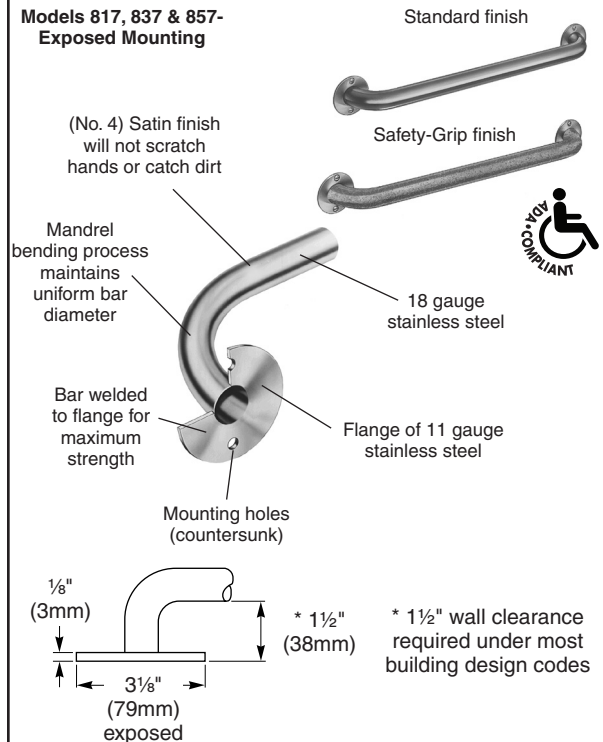
Grab bar shall be fabricated of satin finish stainless steel with concealed mounting flanges in sizes and configurations as indicated. Install with Bradley Mounting Kits as indicated.

Orders composed of products indicated as **Bradex**® will be available to ship in three days after receipt of order at the factory. There is no pricing penalty for this service from Bradley.

Models 812, 832 & 852 - Concealed Mounting



Models 817, 837 & 857 - Exposed Mounting





812, 817, 832, 837, 852, 857


Bariatric Grab Bar Series

Configuration Information

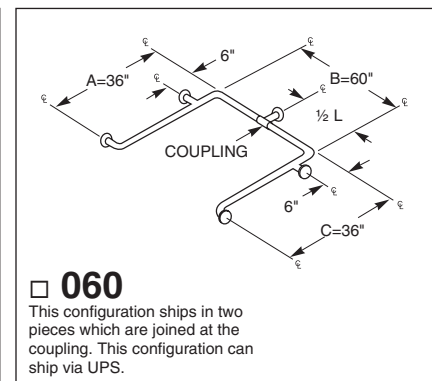
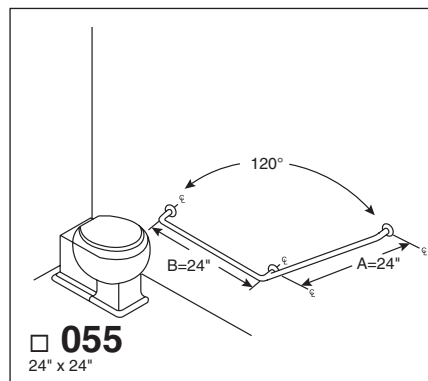
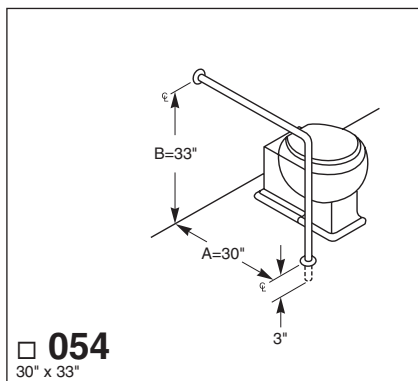
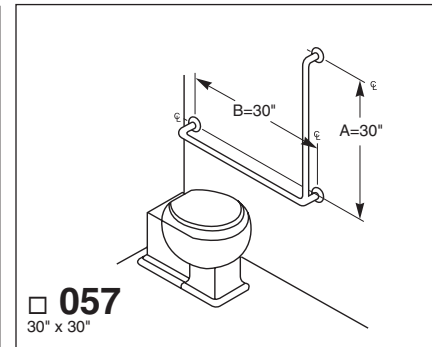
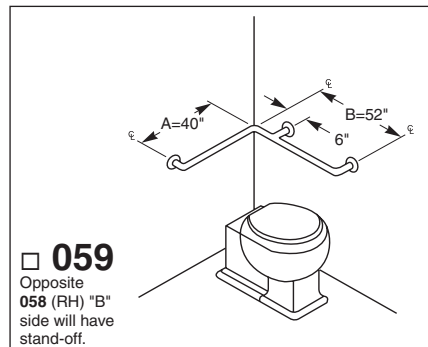
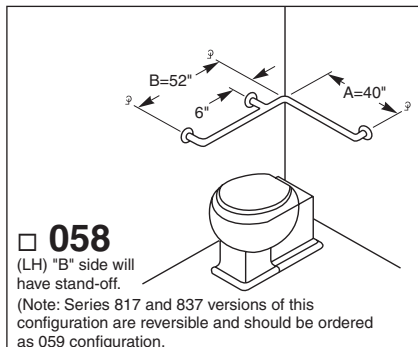
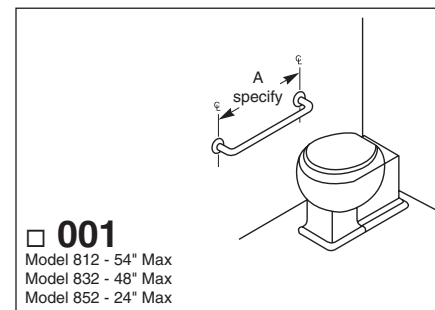
| Bariatric Models | | 852/857 | 832/837 | 812/817 |
|----------------------|-----------------|------------------|---------|---------|
| OD | | 1" | 1-1/4" | 1-1/2" |
| Rating (LBS) | | 900 | 900 | 1000 |
| Configuration Number | Grab Bar Length | Bariatric Models | | |
| | | 852/857 | 832/837 | 812/817 |
| 001-12 | 12" | | X | X |
| 001-18 | 18" | X | X | X |
| 001-24 | 24" | X | X | X |
| 001-36 | 36" | | X | X |
| 001-48 | 48" | | X | X |
| 001-54 | 54" | | | X |
| 059 | up to 42" x 54" | | X | X |
| 057 | 30" x 30" | | X | X |
| 054 | 33" x 30" | | | X |
| 055 | 24" x 24" | | | X |
| 060 | 36" x 60" x 36" | | | X |

Optional Features

| Features | Suffix |
|--|--------|
| <input type="checkbox"/> Safety-grip finish | -2 |
| <input type="checkbox"/> High-polish finish | -4 |
| <input type="checkbox"/> Safety grip with high-polished finish | -7 |
| <input type="checkbox"/> Antimicrobial finish: 1-1/2" - 001-18", 001-24", & 001-36" only | -AM |

 **Bradex®** Item - Standard Finish

 **Bradex®** Item - Standard Finish or Safety Grip Finish (-2)



Orders composed of products indicated as **Bradex®** will be available to ship in three days after receipt of order at the factory. There is no pricing penalty for this service from Bradley.